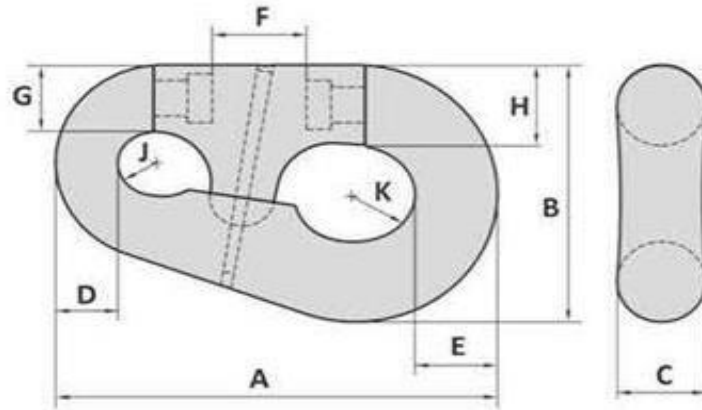


## ELO FORJADO “ C “ TIPO PÊRA



Art. No.	Type No.	Chain mm	A mm	B mm	C mm	D mm	E mm	F mm	G mm	H mm	J mm	K mm	Weight kg
40000106	6	52 - 60	480	337	103	66	83	125	81	103	43	71	61
40000107	7	62 - 79	570	370	113	85	96	155	92	113	49	70	100
40000108	8	81 - 92	655	430	131	99	129	162	119	131	58	81	150
40000110	10	97 - 102	900	580	181	127	168	192	151	181	75	104	385

Tolerance: Forged parts  $\pm 5\%$

Art. No.	Type No.	Chain inch	A inch	B inch	C inch	D inch	E inch	F inch	G inch	H inch	J inch	K inch	Weight lbs
40000106	6	2 $\frac{1}{16}$ - 2 $\frac{3}{8}$	18 $\frac{29}{32}$	13 $\frac{1}{4}$	4 $\frac{1}{16}$	2 $\frac{19}{32}$	3 $\frac{1}{4}$	4 $\frac{15}{16}$	3 $\frac{3}{16}$	4 $\frac{1}{16}$	1 $\frac{11}{16}$	2 $\frac{13}{16}$	134
40000107	7	2 $\frac{7}{16}$ - 3 $\frac{1}{8}$	22 $\frac{7}{16}$	14 $\frac{9}{16}$	4 $\frac{7}{16}$	3 $\frac{11}{32}$	3 $\frac{25}{32}$	6 $\frac{3}{32}$	3 $\frac{3}{8}$	4 $\frac{7}{16}$	1 $\frac{15}{16}$	2 $\frac{3}{4}$	220
40000108	8	3 $\frac{3}{16}$ - 3 $\frac{5}{8}$	25 $\frac{25}{32}$	16 $\frac{15}{16}$	5 $\frac{5}{32}$	3 $\frac{29}{32}$	5 $\frac{1}{16}$	6 $\frac{3}{8}$	4 $\frac{11}{16}$	5 $\frac{1}{32}$	2 $\frac{9}{32}$	3 $\frac{3}{16}$	331
40000110	10	3 $\frac{13}{16}$ - 4	35 $\frac{7}{16}$	22 $\frac{27}{32}$	7 $\frac{1}{8}$	5	6 $\frac{3}{8}$	7 $\frac{9}{16}$	5 $\frac{15}{16}$	7 $\frac{1}{8}$	2 $\frac{15}{16}$	4 $\frac{3}{32}$	849

Tolerance: Forged parts  $\pm 5\%$

18-06-2012